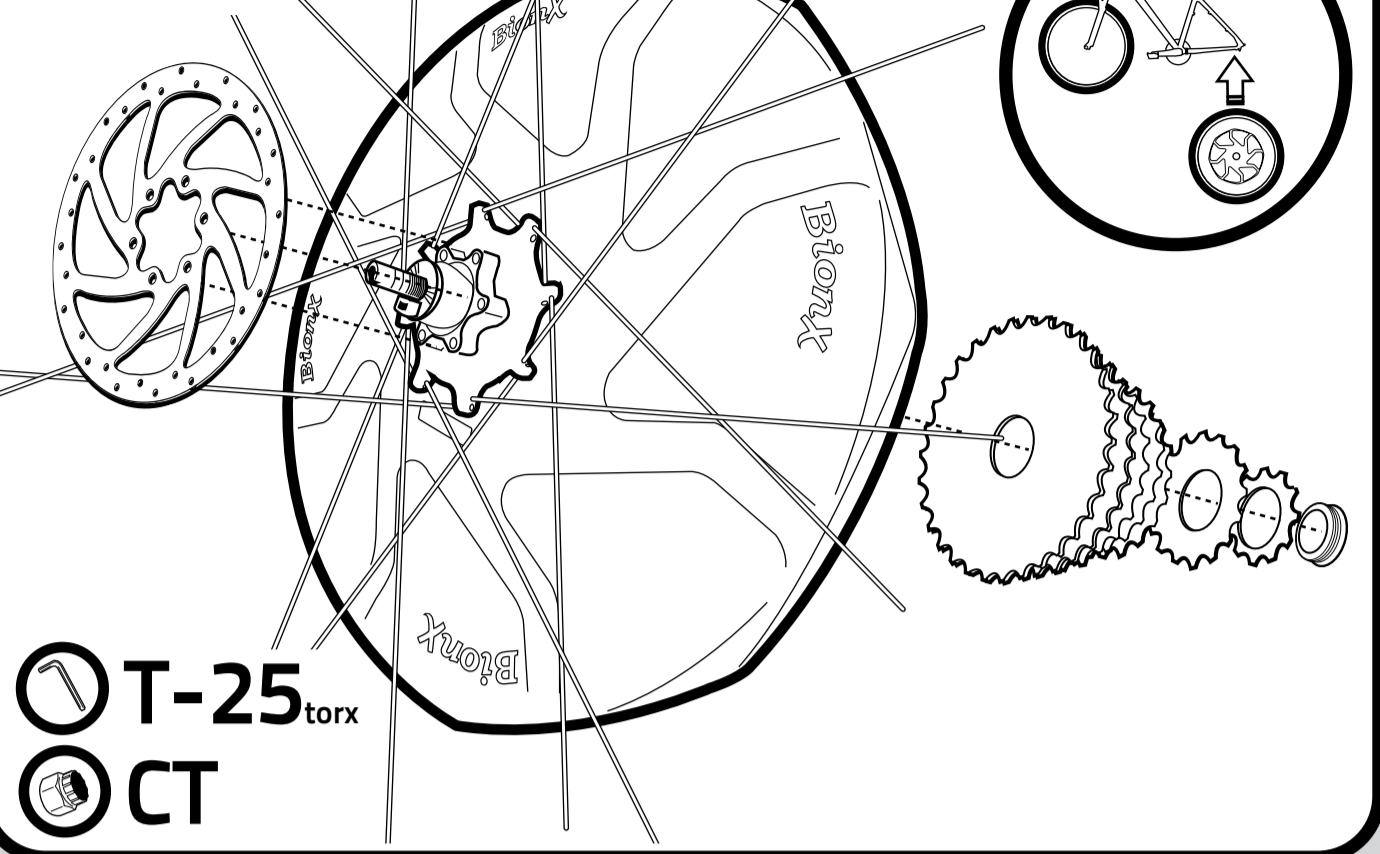
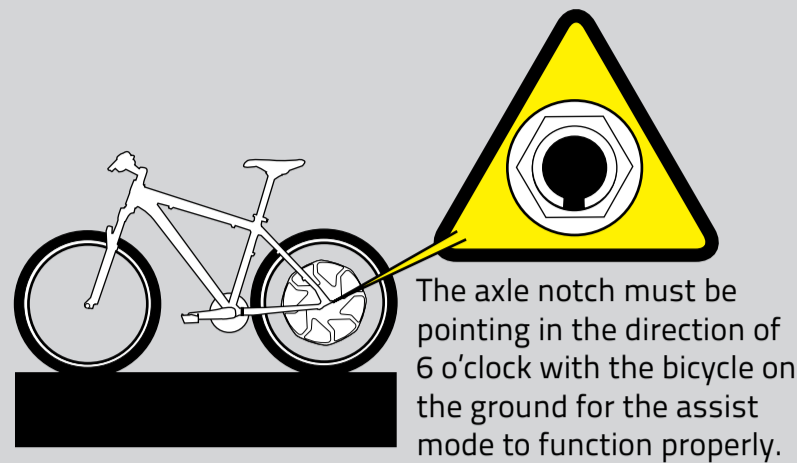


Step 1

Motor



VERY IMPORTANT!



Alternate 142mm axle

Drive Side

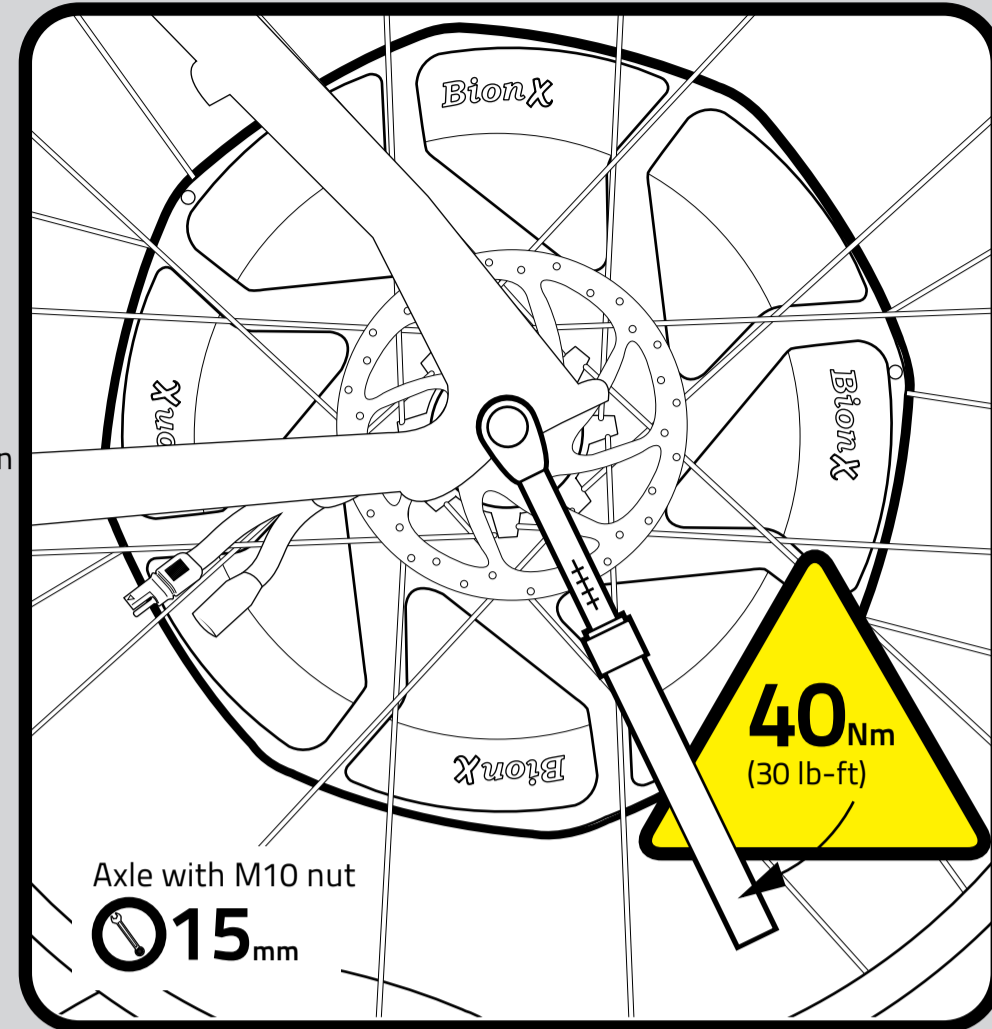
15Nm
(10 lb-ft)

Non-Drive Side
35Nm
(25 lb-ft)



TLF
6mm

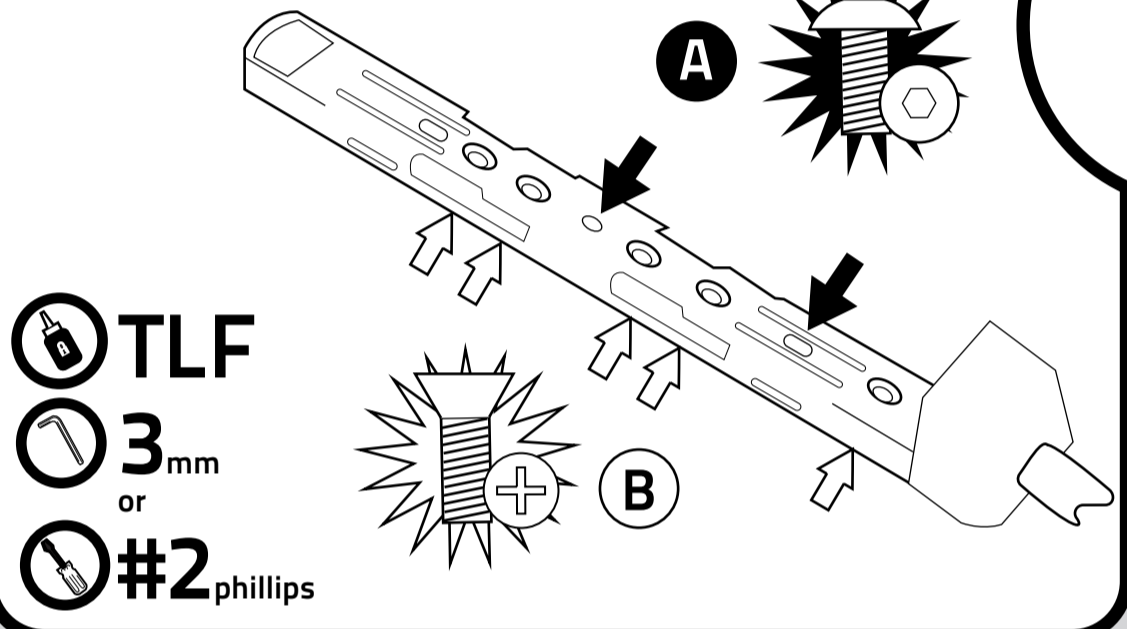
Use a torque wrench and thread locking fluid!



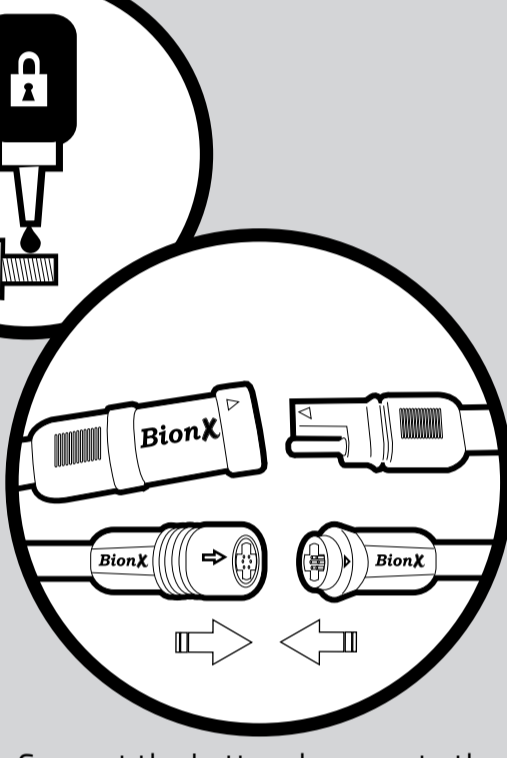
Required axle nut torque is 40Nm (30lb-ft). Use a torque wrench!

Step 2

Battery Harness



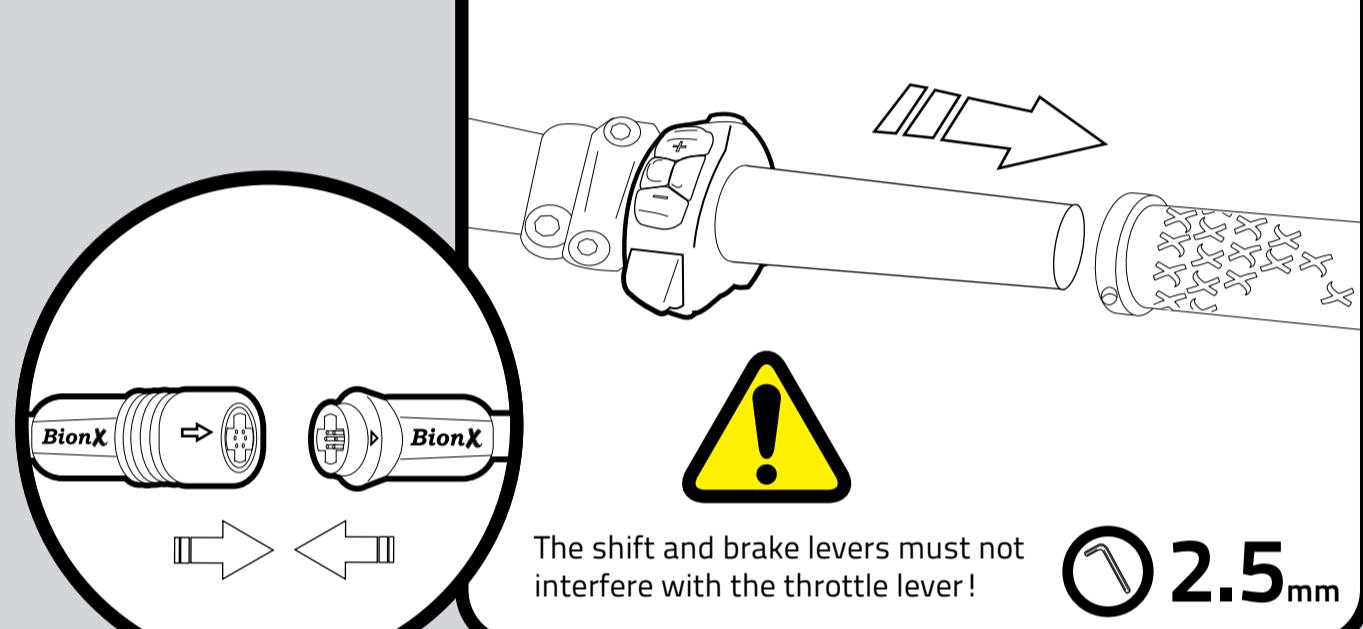
Use B only if A doesn't fit the frame. If B is used, make sure the heads are installed flush with the battery rail. Ensure that the rail doesn't bend when tightening.



Connect the battery harness to the motor. Make sure the motor power cable is well connected!

Step 3

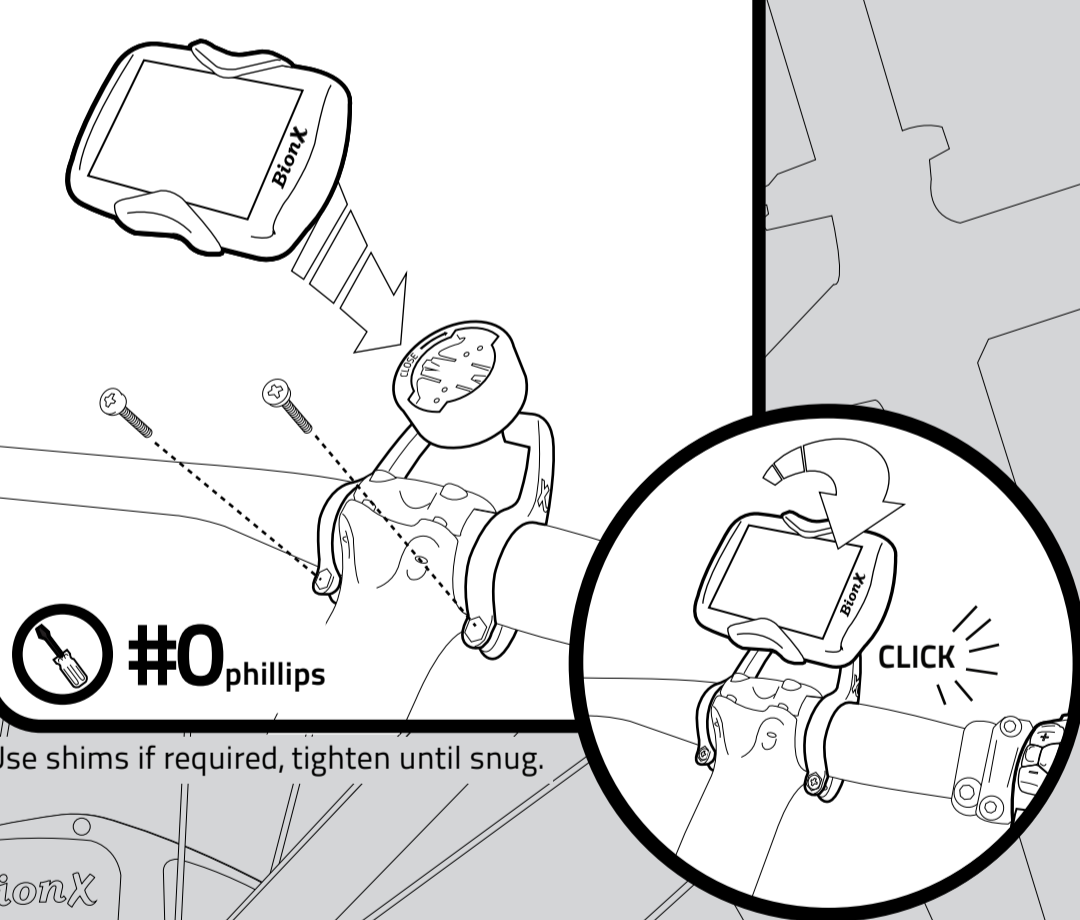
RC3 Controller



The shift and brake levers must not interfere with the throttle lever!

Step 4

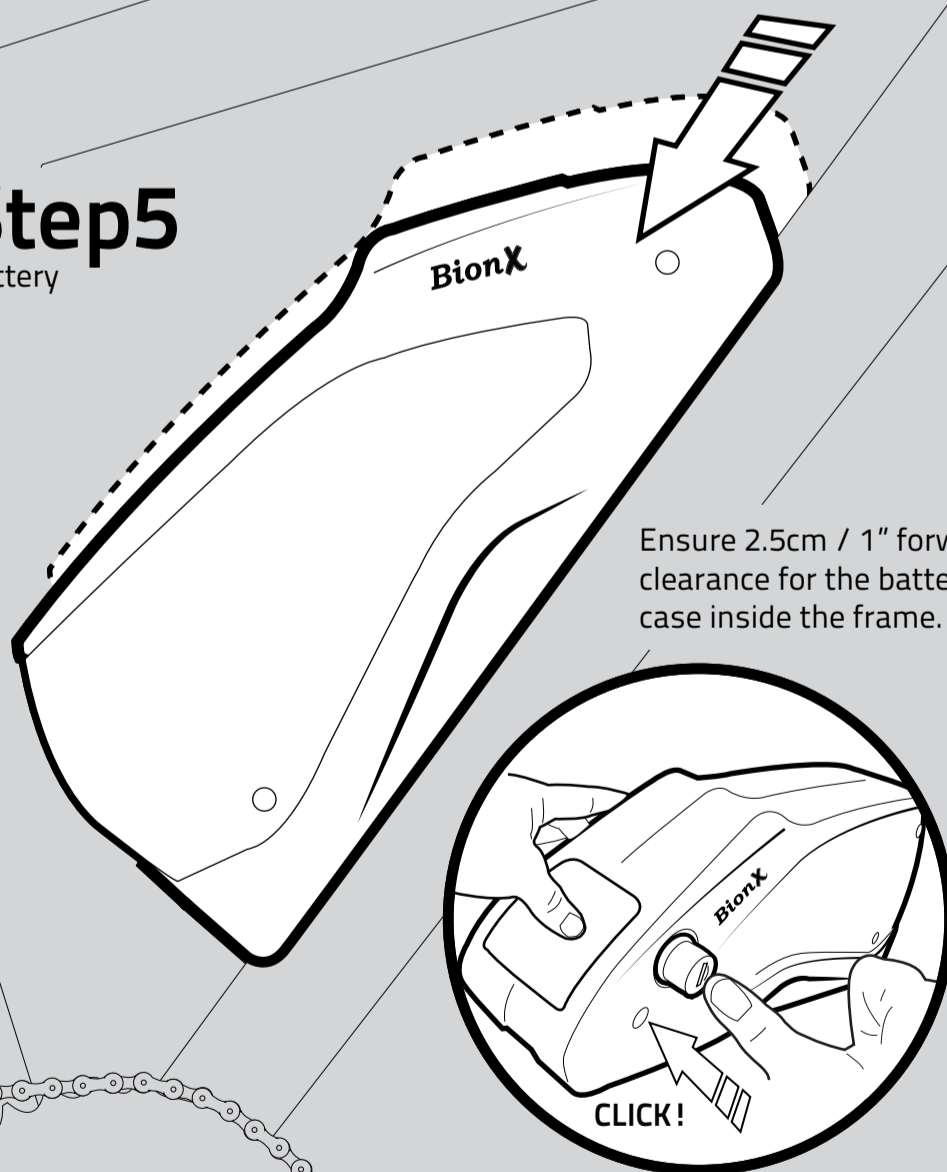
DS3 Display (where supplied)



Use shims if required, tighten until snug.

Step 5

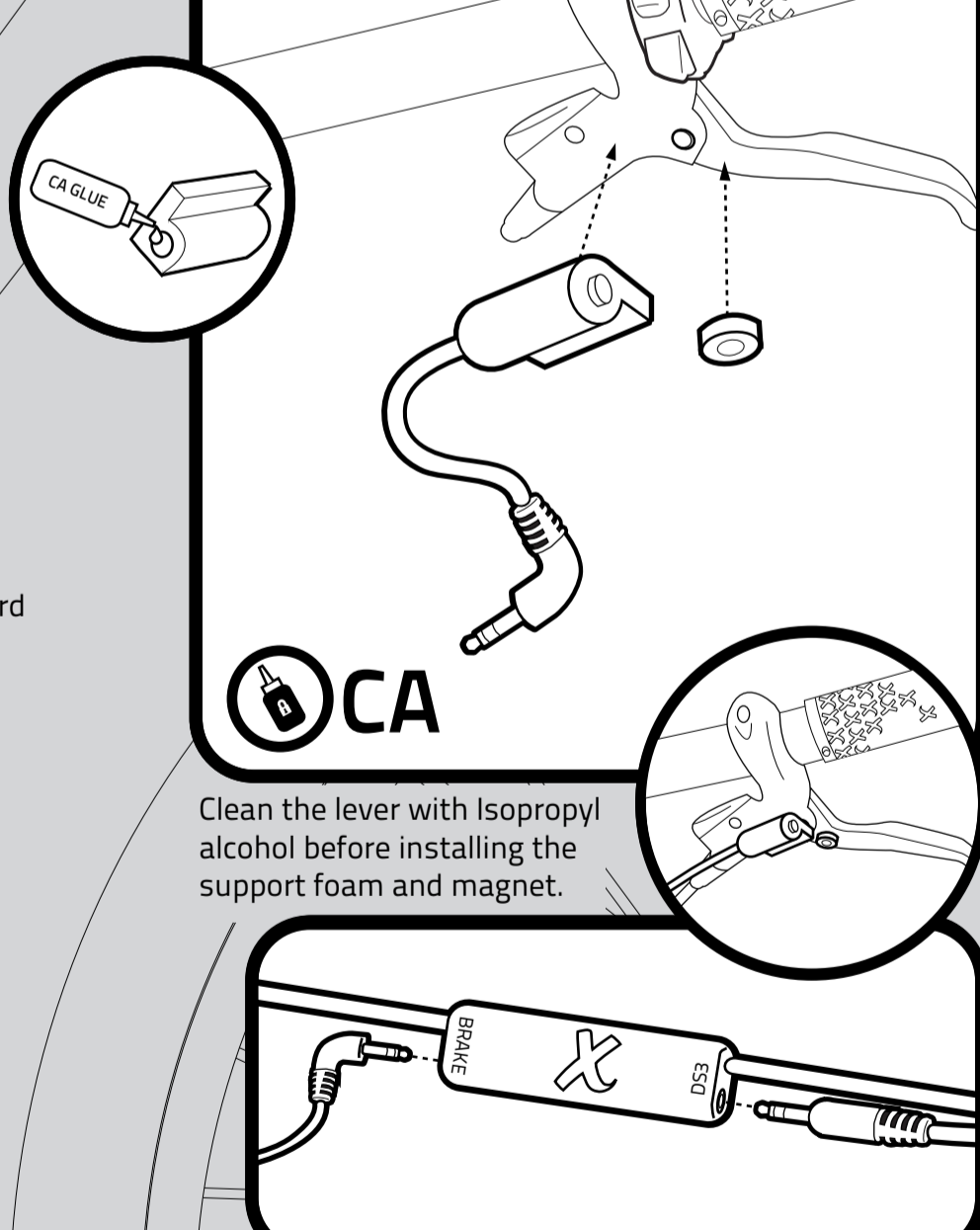
Battery



Ensure 2.5cm / 1" forward clearance for the battery case inside the frame.

Step 6

Brake Switch & Magnet



Clean the lever with Isopropyl alcohol before installing the support foam and magnet.

Plug the brake switch and DS3 dock into the RC3 junction.

Tool List / Legend

- #2 Phillips screwdriver
- #0 Phillips screwdriver
- Torque wrench and 15mm socket (axle with M10 nut)
- Torque wrench and 6mm allen key (142mm axle)
- 3mm allen key
- 2.5mm allen key
- T-25 Torx key
- Cassette tool (CT)
- Thread locking fluid (TLF)
- Cyanoacrylate glue (CA)

System parts may not be exactly as shown. Always have your BionX system professionally installed at an Authorized BionX dealer. For more information please see our YouTube channel: Pour les instructions en français voir - Für Anleitungen in Deutsch besuchen Sie bitte: www.ridebionx.com/downloads



Step 7

Mandatory Activation



The system must be activated with the BionX Bike Interface, by a BionX dealer!